

## Product : Sewage treatment plant

Type : X-Perco® C-90  
 Model : C-90 15 PE (2)  
 Process : Tricking filter

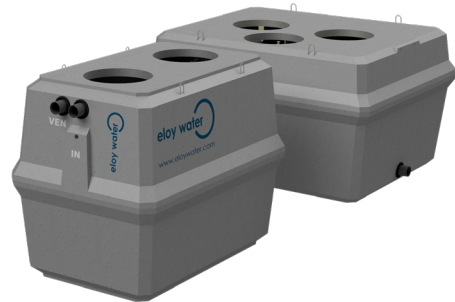
### PERFORMANCE

#### Considered influent water

Characterization :	Sewage*
Pollutant load BOD <sub>5</sub> :	0.90 kg O <sub>2</sub> /day
Pollutant load SS :	1.35 kg/day
Hydraulic load :	2.25 m <sup>3</sup> /day
NTK :	80 mg/liter
P :	17 mg/liter
Fat & Oil :	20 mg/liter

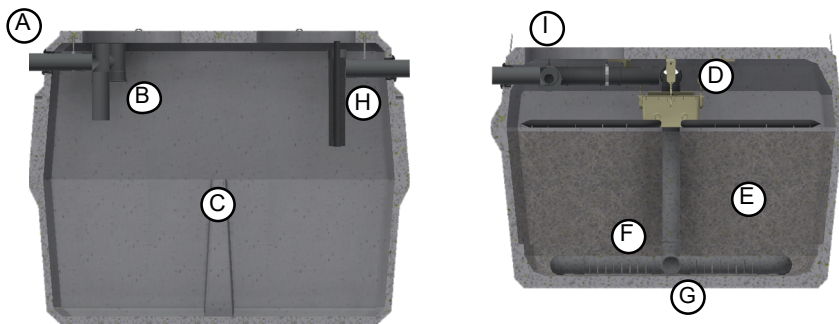
#### Purification performance

BOD <sub>5</sub> :	< 25 mg O <sub>2</sub> /liter
COD :	< 125 mg O <sub>2</sub> /liter
SS :	< 30 mg/liter
NH <sub>4</sub> :	< 2 mg/liter



\* We recommend placing a grease trap for treating waste water generated by a restaurant, kitchens used for commercial purposes, etc.

### OPERATION



### ELECTROMECHANICAL KIT

#### Components

Tank(s) :	High performance fiber reinforced concrete
Partition :	High performance fiber reinforced concrete
Effluent filter :	PE
Tipping bucket :	PVC/PE/PP/Stainless Steel
Tricking filter :	Xylit

#### Legend

A	High inlet
B	Ventilated T pipe
C	Primary settling compartment
D	Flow Distribution system
E	Tricking filter
F	Treated water discharge piping system
G	Low outlet
H	Effluent filter
I	Split flow device

### SPECIFICATIONS

Tank :	10 years
Xylit :	10 years
Other equipment :	2 years
Resistance :	B125
Authorized backfill :	80 cm

### OPTIONS

- 4 risers
- 4 lids

### APPROVALS AND CERTIFICATES



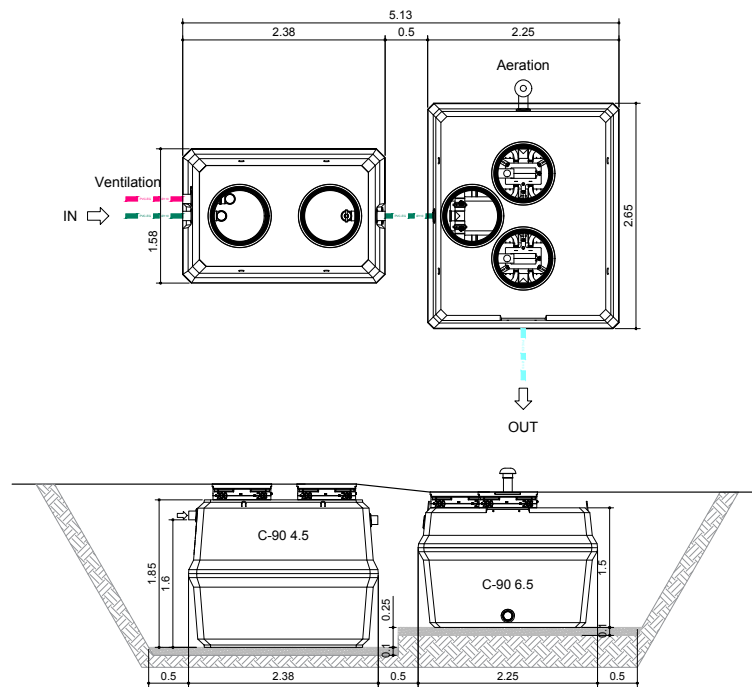
: EN 12566-3 CPD 89/106/CEE

## DIMENSIONS | VOLUMES | WEIGHT

Measure	Unit	Tank	Filter
Total height :	(cm)	185	150
Entry height :	(cm)	160	127
Exit height :	(cm)	156	9
Length :	(cm)	238	265
Width :	(cm)	158	225
Weight :	(T)	2.60	5.75
Footprint :	(m <sup>2</sup> )	4.00	6.00
Manhole(s) :	(cm)	2 x Ø62	3 x Ø62
Ø In / Out :	(mm)	110/110	110/110

\* tolerance ± 2 cm

## SIZING



## OPERATION

**Useful volumes**

Primary settling compartment :	4.17	m <sup>3</sup>
Trickling filter compartment :	4.02	m <sup>3</sup>

**Operation**

Theoretical draining frequency : every 13 months  
 Advised maintenance frequency : yearly  
 Effluent filter cleaning frequency : min. twice a year

**Consumables**

Xylit replacement :	10 years
Alarm battery :	7 years

**Complementary accessories supplied with the product :**

- 1 information pocket
- 2 effluent filters
- 1 level alarm
- 2 rotating buckets
- 1 key
- 2 90° Ø110mm FF elbow
- 2 Ø110mm ventilation cap
- 6 Ø110mm FF connection