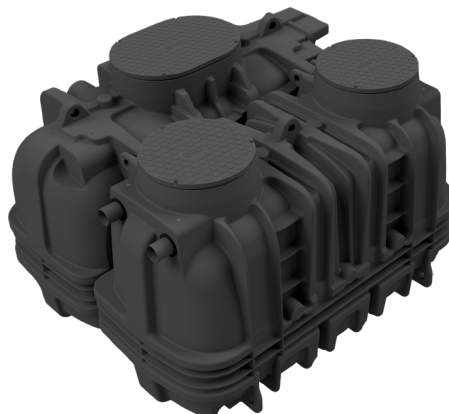


technical characteristics



| dimensions | unit | |
|----------------|----------------|------------------------|
| TOTAL HEIGHT | cm | 170** |
| ENTRY HEIGHT | cm | 135 |
| EXIT HEIGHT | cm | 7.5 |
| LENGHT | cm | 265 |
| WIDTH | cm | 236 |
| WEIGHT* | T | 1.16 |
| FOOTPRINT** | m ² | 6.254 |
| MANHOLE(S) | cm | 2 x Ø62 + 1 x 90 x Ø62 |
| DIAM. IN / OUT | mm | 110/110 |

* weight with buffer and without pallet for the whole product / tolerance ± 2 cm
 ** with integrated 20cm riser

| considered influent water | unit | |
|---------------------------------|------------------------|-------|
| CHARACTERIZATION | sewage* | |
| POLLUTANT LOAD BOD ₅ | kg O ₂ /day | 0.30 |
| POLLUTANT LOAD COD | kg O ₂ /day | 0.675 |
| POLLUTANT LOAD SS | kg/day | 0.45 |
| HYDRAULIC LOAD | m ³ /day | 0.75 |

* we recommend placing a grease trap for treatment of wastewater generated by restaurants, kitchens used for commercial purposes, etc.

| purification performances | unit | |
|---------------------------|--------------------------|-------|
| BOD ₅ | mg O ₂ /litre | < 25 |
| COD | mg O ₂ /litre | < 125 |
| SS | mg/litre | < 30 |
| NH ₄ | mg/litre | < 2 |

| materials | |
|------------------|---------------------------|
| TANK(S) | polyethylene (PE) |
| EFFLUENT FILTER | polypropylene (PP) |
| TIPPING BUCKET | PVC/PE/PP/stainless steel |
| TRICKLING FILTER | xylit |

| useful volumes | unit | |
|-------------------------------|----------------|------|
| PRIMARY SETTLING COMPARTEMENT | m ³ | 3.18 |
| TRICKLING FILTER COMPARTEMENT | m ³ | 2.16 |

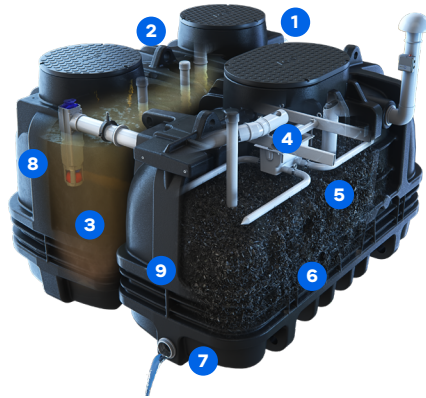
| operation | |
|-------------------------------|-----------------|
| THEORICAL DRAINING FREQUENCY | every 28 months |
| ADVISED MAINTENANCE FREQUENCY | annual |

| consumables | |
|-------------------|---------------|
| XYLIT REPLACEMENT | min. 12 years |
| ALARM BATTERY | min. 7 years |

| installation conditions | |
|-------------------------|-----|
| RESISTANCE | A15 |



components & options



- 1 high inlet
- 2 ventilated T pipe
- 3 primary settling compartment
- 4 flow distribution system
- 5 trickling filter
- 6 treated water discharge piping system
- 7 low outlet
- 8 effluent filter
- 9 level alarm
- 10 ventilation

composition

- 1 compact filter
- 1 information pocket
- 1 level alarm
- 1 rotating tilter
- 1 key
- 7 pvc reductions 110/100mm
- 90° Ø 110mm FF elbow
- 1 Ø 110mm ventilation cap
- 4 Ø 110mm connection

options

- 3 risers (2 round + 1 oblong)
- lifting station
- sampling chamber

garanties



10 + 5
years*
tank



10 + 2 years*
internal components**



2 + 1 years*
other equipment***

* within 6 months of being put into service, if the identification card has been returned to eloy water. All warranty conditions are available from the manufacturer.

** distribution device, allocation device and filter media (excluding tipping device).

*** excluding accessories (lift pumps, traps, risers, batteries,...).

drawing

X-PERCO R-90 5 EH (monobloc)

Aération

